

The Parts of a Flower

Anthers

Are the small pod shapes on the top of the filaments. Their job is to make the pollen.

Petal (Corolla)

The outer part of the flower. Petals can come in lots of different shapes and sizes.

Stigma

This is the part of the flower, that receives pollen.

Sepal (Calyx)

Gives the flower protection, before it is ready to open.

Style

This part of the flower connects the stigma to the ovary. The pollen grows a tube through it, which will eventually reach the ovary.

Ovary

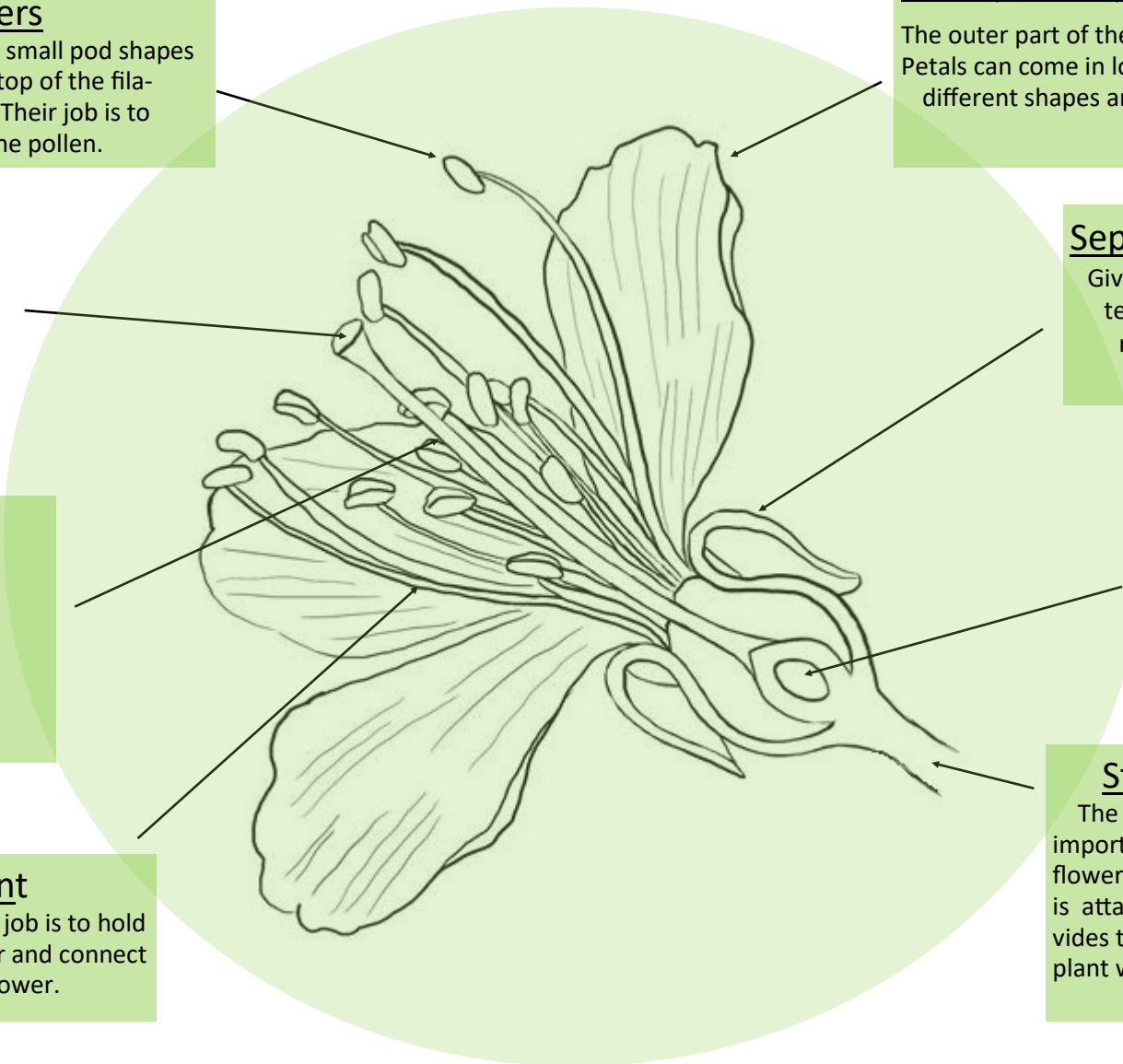
This part becomes a fruit after fertilisation.

Filament

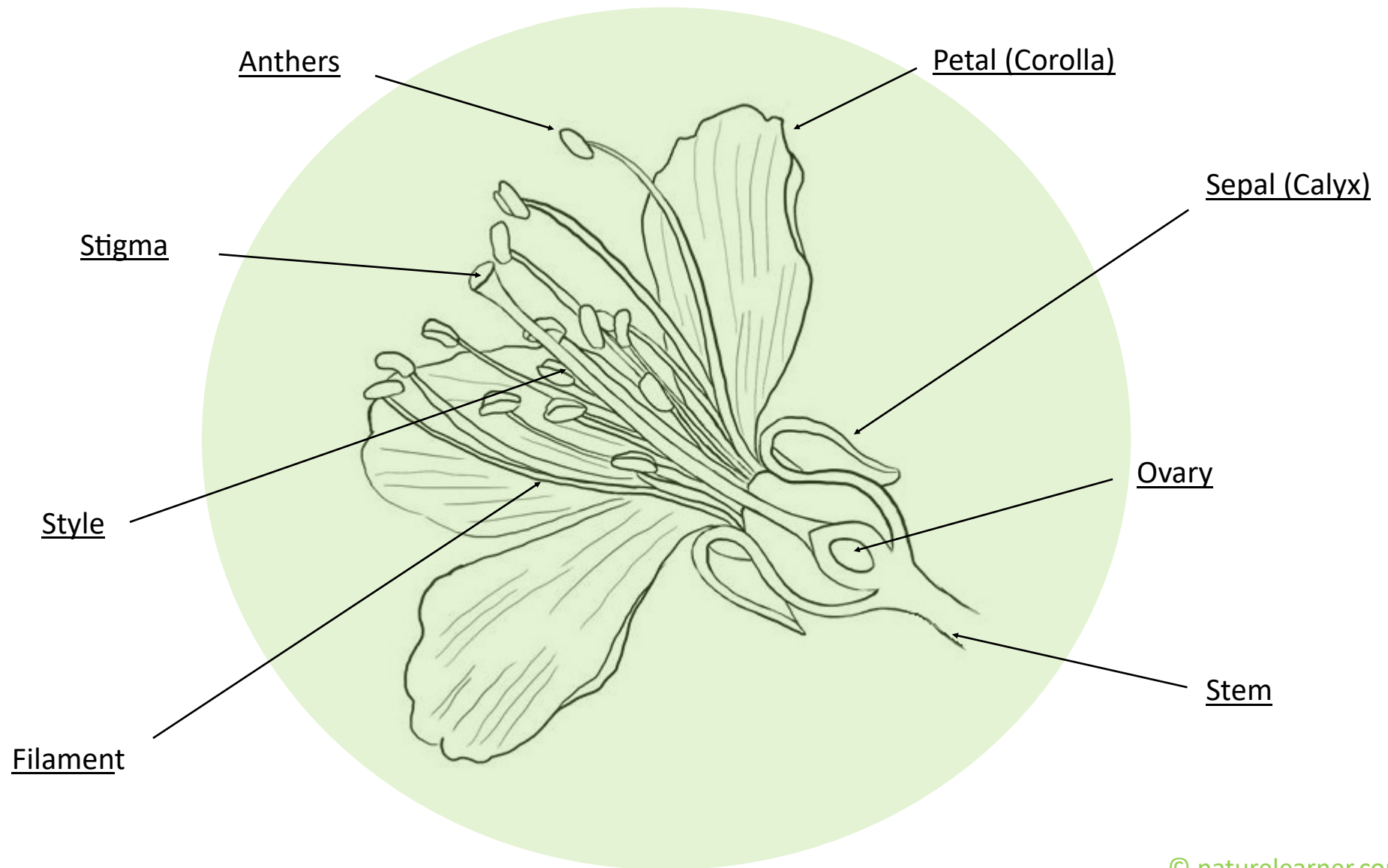
The stalks job is to hold the anther and connect it to the flower.

Stem

The stem of the flower has an important job of supporting the flower, leaves and buds. The stem is attached to the root and provides the different areas of the plant with water and minerals.



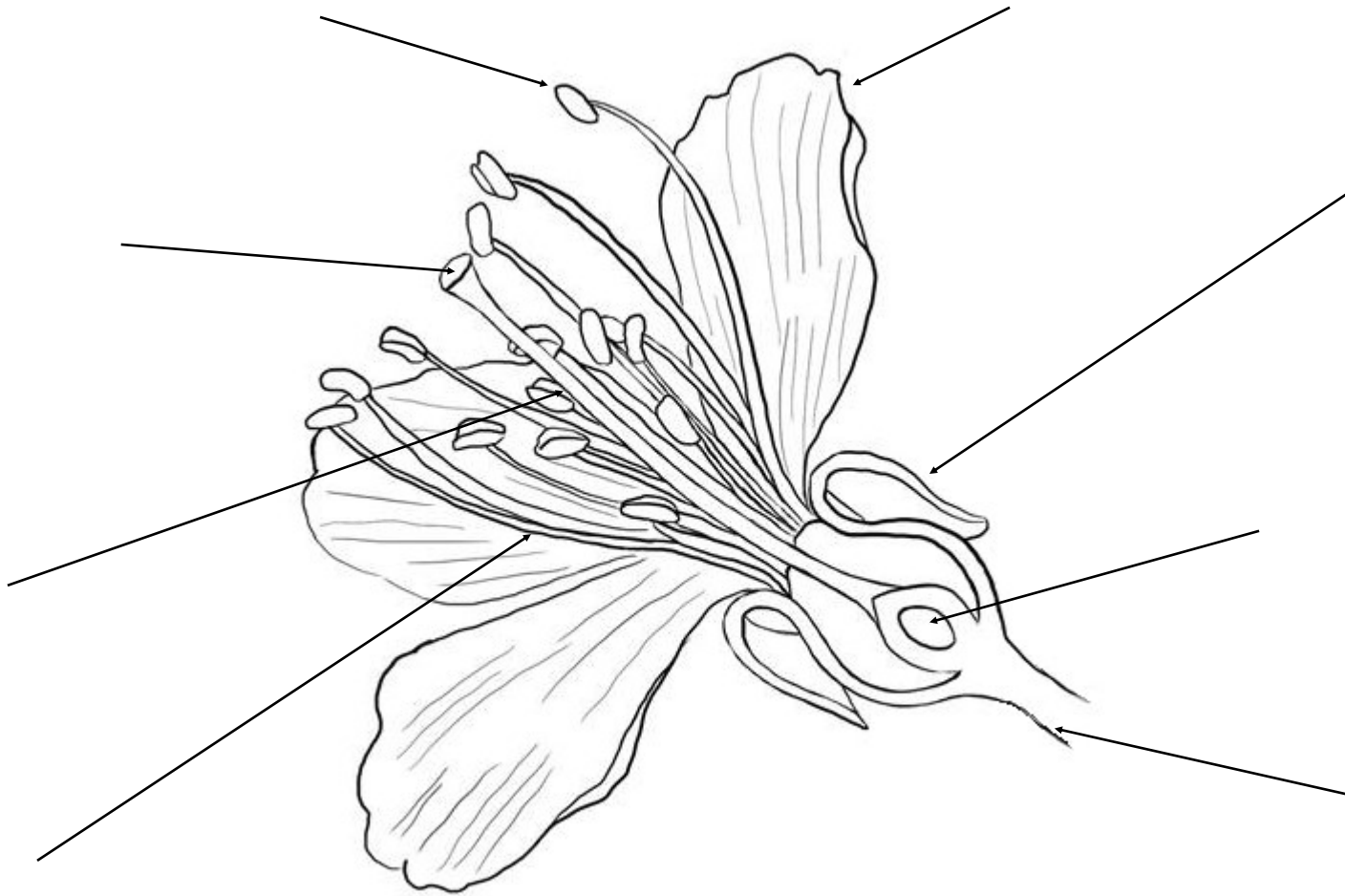
The Parts of a Flower



The Parts of a Flower

Instructions

Complete the diagram.



The Parts of a Flower



© naturelearner.com

Stamen	Filament	Petal	Sapel
Petal	Stigma	Ovary	Anther

Instructions

Cut out the missing words and complete the diagram.